

Silent Oil Free Air Compressor

Instruction manual



Diagrams within this manual may not be drawn proportionally. Due to continuing improvements, actual product may differ slightly from the product described herein.

Diagrams within this manual may not be drawn proportionally.

Due to continuing improvements, actual product may differ slightly from the product described herein.



Read this manual before using this product.

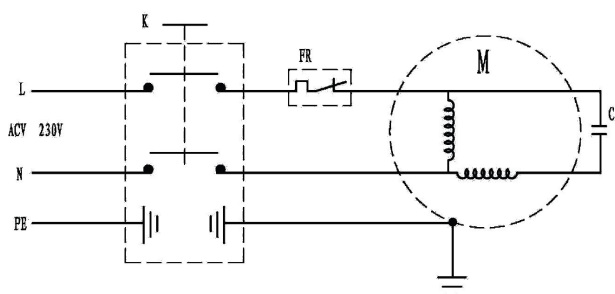
Failure to do so can result in serious injury.

Save this manual.

CONTENTS

1. Electrical Diagrams and Specifications.....	1
2. After sale service introduction.....	2~3
3. Product introduction.....	3~4
4. User guide of compressor.....	4
5. Operation requirement.....	4~5
6. Repairment and maintenance.....	5~6
7. Troubles and remedies.....	6~7
8. Exploded drawing components.....	8~9

ELECTRICAL DIAGRAMS



ATTENTION

1. Can't using in a place which has an explosive dangerous goods.
2. Using with the compressing of normal air. There can't be together with any inflammable and explosive gas when using.
3. The ambient temperature should be $-10^{\circ}\text{C} \sim 40^{\circ}\text{C}$

SPECIFICATION

MODEL	POWER	AIR TANK	MAX PRESSURE		Air Delivery	SPEED		G.W/N.W	Carton Size
	K.W/HP	(Liter)	(Bar)	(PSI)	(L/min)	(50Hz)	(60Hz)	(Kg)	(cm)
S5501-6L	0.55/0.75	6	8	115	102	1400	1700	20.5/19	46×42×39
S7501-6L	0.75/1	6			124			21/19.5	44×41×41
S5501-8L	0.55/0.75	8			102			15/14	51×22×51
S5501-24L	0.55/0.75	24			102			18/16	56×28×53
S7501-24L	0.75/1	24			124			19//17	56×28×53
S5502-50L	1.1/1.5	50			204			38/35	72×33×66
S7502-50L	1.5/2	50			248			40/37	72×33×66
S5503-100L	1.65/2.5	100			306			85/70	112×42×75
S7503-100L	2.2/3	100			352			88/73	112×42×75
S1101-50L	1.1/1.5	50			196			38/35	72×33×76
S1501-18L	1.5/2	18			235			45/42	60×58×58
S1501-50L	1.5/2	50			235			40/37	72×33×76
S1102-100L	2.2/3	100			392			88/73	112×39×82
S1502-100L	2.2/3	100			470			90/75	112×39×82
S7501-6L	0.55/0.75	6	8	115	204	2800	3400	20.5/19	46×42×39
S9501-6L	0.75/1	6			248			21/19.5	44×41×41
S7501-8L	0.55/0.75	8			204			15/14	51×22×51
S7501-24L	0.55/0.75	24			204			18/16	56×28×53
S9501-24L	0.75/1	24			248			19//17	56×28×53
S7502-50L	1.1/1.5	50			408			38/35	72×33×66
S9502-50L	1.5/2	50			496			40/37	72×33×66

2. After sale service introduction

2.1 Prologue

Thank you for your selecting the silent oil free air compressor from our company. This oil free series product is a result of our research specialist and engineers of R&D, their many years experience, combined with latest technology, with key parts originally imported from overseas famous manufacturers. Our product has be strictly impacted before leaving the factory, whereas in order to ensure its reliability and working life, it is strongly recommended to read the manual carefully. Contact our company or our authorized dealer which is near to you if necessary. We wish you satisfied in using our product.

2.2 Content of service

2.2.1 Quality assurance

We give one year warrant valid from the day of delivery, with limitation of normal use and correct operation according to he user manual. During the period of warrant's validity, we give compensation or replacement FOC or charged depending on the situation if the product is damaged or of defect. Manufacturer's quality control department is the party who is entitled to explain and define whether damage is within the quality assurance or not. The quality assurance dose not include the direct, indirect damage to person or stuff because of the wrong operation and repairing the machine.

2.2.2 After sale service

During quality assurance, wee agree to send our technician to buyer's company for further checking and demonstration if technique support is really in need.

2.3 Product inspection upon arrival

2.3.1 When you receive the air compressor, please check whether the product is the

2

right model and required specification.

2.3.2 Check whether there is any damage of the machine and its component. If yes, contact our merchandiser, we promise a complete solution for you.

3. Product introduction

This silent oil free air compressor can provide no oil polluted, pure eco-friendly air source, which can be applied to dental clinic, food and beverage industry, medical company, health care center, chemical industry and scientific experiment field. It can also be used as vacuum pump. The advantages are as following:

3.1 The power motor takes advantage of advanced designing system which can optimize the function, consequently realize the power, efficient, energy-saving performance and high reliability.

3.2 We use new-developed, eco-friendly material for piston ring, with the advantage of small coefficient, self-lubricated. It takes place of traditional way of oil-lubricated, moreover, it will not contain any harmful oily stuff which may cause the second pollution to the air source.

3.3 The cylinder is processed with the art of surface hardening treatment, with the advantage of light weight, quick thermal conductivity, which the art of surface hardening treatment, with the advantage of light weight, quick thermal conductivity, which can improve the wear resistance, reduce the coefficient, subsequently extend the life time of machine and reduce maintenance time and fees.

3.4 Air intake/outlet valve clack uses Sweden-made valve with specialized steel. It is

processed after 80 hours special treatment, which can make sure the stable performance during its rated lifetime.

3.5 Proper silent-design of air suction and low-noise engine as well as specialized

3

bearing for reducing the noise, all these new technologies promise a more silent effect compared to other product of this sort.

3.6 Multiple pressure and overload protection can make the machine run in a stable condition. The whole machine adopts scientific design and considerate conception, it is easy to be operated and maintained.

4. User guide of compressor

4.1 If fail to start, please release the air of tank till the pressure comes down to 5~6bar, it will be start.

4.2 Turn the switch to "off", cut off the power supply, the machine will stop running.

4.3 There is safety valve will alarm and release the air. By the time of alarm, please check out the pressure switch, make sure the pressure switch works under rated working pressure.

4.4 Everyday when the machine stops, use your finger to press the needle below the oil-water separator, it will exhaust the dirty water in the oil water separator. (some users may not apply oil-water separator, this term is not for reference.)

4.5 The air pressure could be adjusted through button on the oil-water separator, turn the knob in clockwise direction, it can increase the air pressure, turn in anti-clockwise direction, it can reduce the air pressure till shut down the air source.

4.6 When you want to adjust the working pressure of the pressure switch, please remove the cover of it, adjust the turning screw in it, in clockwise direction, r pressure

increasing, on the contrary, pressure decreasing.

Notice: power should be cut off before operation.

5. Operation requirement

5.1 Before operation, please read the instruction manual carefully.

4

5.2 The compressor should be placed in dry and ventilated room. Keep the machine away from the perishable, flammable items and chemicals. It should not exceed two years till you got the product and leave in idle. Necessary maintenance and experiment should be applied before it is put in use.

5.2 It should be avoided crashing. And it should be placed balanced, during transportation and operation, should not be oblique.

5.3 In order to guarantee the good performance of it, the machine should be placed in an ventilated, clean and cool area. Dusty and high temperature, directly air environment is not suggested.

5.4 Before connecting with the power supply, make sure the machine is shut down. After connecting with the power, the machine can work normally. The voltage must not be 10% higher or lower than the rated voltage be lower or higher.

5.5 Air compressor is forbidden to be wet by water, and it should not be placed in wet area to avoid the damage.

5.6 No touching high temperature component, such as cylinder head, exhaust pipe, check valve, avoid being burnt.

5.7 Electric wire of power should be in accordance with the power requirement, the cable wire should not be too long, otherwise it will affect the starting of the air compressor.

6. Repairment and maintenance

Maintenance work could be executed only after the power is cut and pressed air is released thoroughly from the tank. Otherwise it will be dangerous!

6.1 Please keep the machine clean. Clean the machine from time to time.

6.2 Drain the dirty water in the tank out, once a week. When draining the water from

5

the tank, make sure the pressure in the tank should be below 1 bar.

6.3 Check frequently if the safety valve is sensitive or not. The safety valve could release the air easily. Pull down the shaft, it will be reset.

6.4 The air filter should be cleaned or replaced every 500hours, simultaneously, take out the air valve and clean it. When the air delivery volume is much less than the rated one, please check if the air filter is blocked, if all the connection is still right, if there is any air leakage. If the piston robber bowl is wear because of the dust, replace it.

6.5 The compressor vessel should be executed with the pressure experiment once two year. Check the outside, if there is any rusty, crashed spot on the tank or fail to pass the pressure experiment, the tank should be scrapped.

7. TROUBLES AND REMEDIES

Warning:all maintenance work should be done before the power is cut and the air in the tank are released, otherwise it will cause the damage.

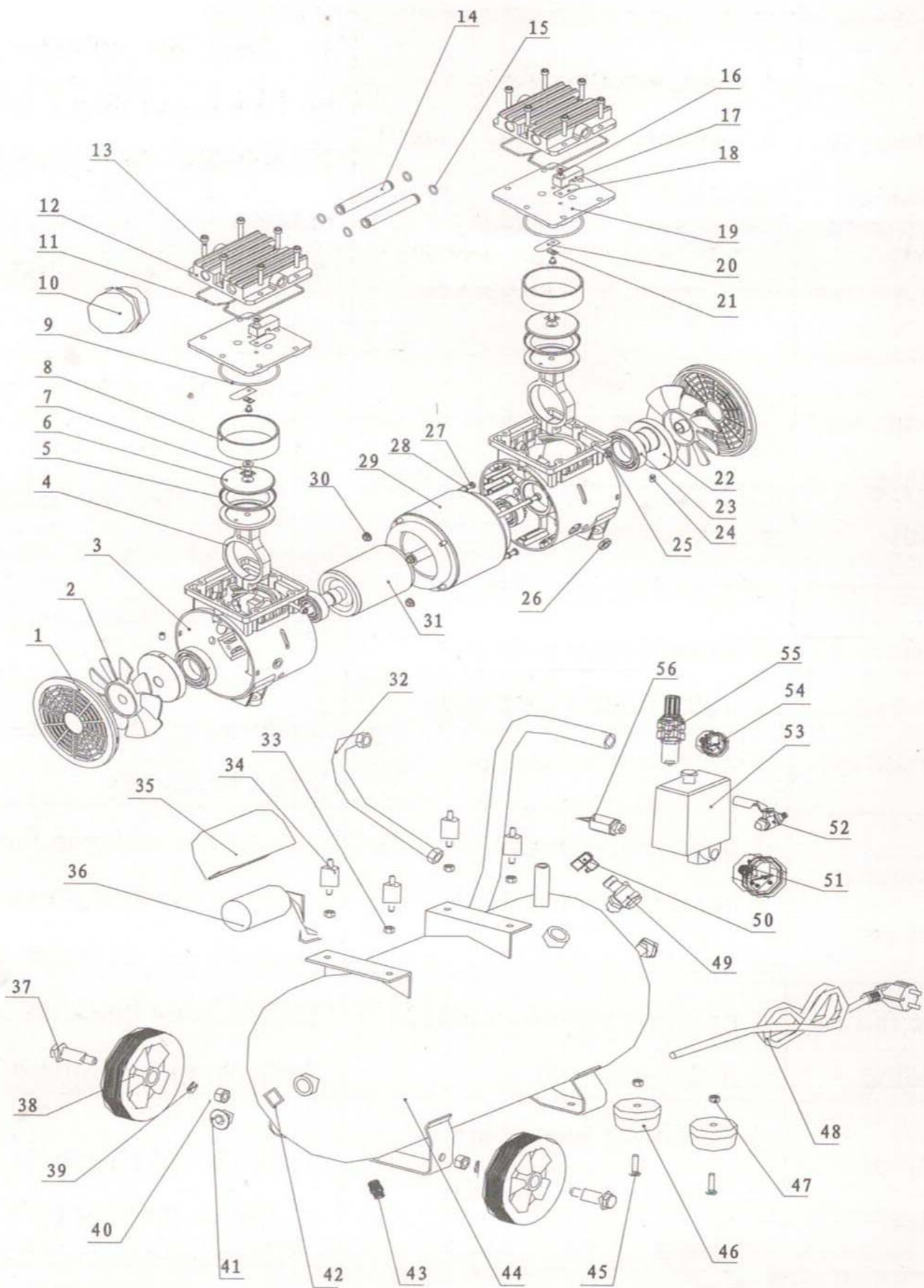
Trouble	Possible cause	Remedies
Motor can't rotate and no sound	1. power disconnect 2. Pressure switch disconnect	1. Check the connection and switch 2. Check it and replace if yes.

	<ul style="list-style-type: none"> 3. Fuse burnt 4. Overload protector is in the state of protection 5. Pressure switch damaged 6. Engine stator burnt 	<ul style="list-style-type: none"> 3. Replace the fuse. 4. Restart the machine till engine cools down. 5. Contact reliable service center 6. Replace the stator
--	--	---

6

Current sound exist but fail to run or run slowly	<ul style="list-style-type: none"> 1. Voltage is two low 2. Engine winding short circuit. 3. Check valve or pressure switch failure 	<ul style="list-style-type: none"> 1. Check the voltage, must not be 10% lower than rated. 2. Contact the reliable service center 3. Contact the reliable service center
Overload protector cut the power frequently	<ul style="list-style-type: none"> 1. Voltage is two low 2. Bad ventilation and high temperature 	<ul style="list-style-type: none"> 1. Check the voltage, must not be 10% lower than rated. 2. Move the air compressor to ventilated area.
Air pressure reduced when machine turned off	<ul style="list-style-type: none"> 1. Air pipe loosen or leak 2. Water drain valve open 3. Check valve leakage 	<ul style="list-style-type: none"> 1. Check and fix it 2. Tighten the drain valve 3. Remove and clean it, replace when necessary
Plenty of water in delivered air	<ul style="list-style-type: none"> 1. Plenty of water in the tank 2. Humidity is too high 	<ul style="list-style-type: none"> 1. Drain the water in the tank out 2. Remove and clean it, replace when necessary.
Compressor fail to stop running	<ul style="list-style-type: none"> 1. Pressure switch damaged 2. leakage 	<ul style="list-style-type: none"> 1. Replace the pressure switch 2. Check and eliminate
Compressor vibration	<ul style="list-style-type: none"> 1. Fasten the loose part 2. Foot pad damaged or missing 	<ul style="list-style-type: none"> 1. Check and eliminate 2. Replace the foot pad
Pressure fail to reach the rated one or not able to increase	<ul style="list-style-type: none"> 1. Water drain valve open 2. Air filter blocked 3. Air leakage 4. Clack dis-function or air leakage. 5. Piston rubber bowl wear and tear 	<ul style="list-style-type: none"> 1. Tighten the water drain valve 2. Clean and replace the air filter element 3. Check and eliminate 4. Clean or replace 5. Replace the piston rubber bowl

CHINAHUAGE.COM



NO.	DESC.	QUANTIT Y	NO.	DESC.	QUANTITY
1	Fan cover	2	29	Stator	1
2	Fan	2	30	Screw	8
3	Crankcase	2	31	Rotor	1
4	Connect rod	2	32	Air pipe	1
5	Piston ring	2	33	Screw	4
6	Press plate	2	34	Rubber pad	4
7	Screw	2	35	Capacitor cover	1
8	cylinder	2	36	Capacitor	1
9	Seal ring	2	37	Wheel axle	2
10	Air filter	1	38	Wheel	2
11	Sealing ring	2	39	Shim	2
12	Cylinder head	2	40	Nut	2
13	Bolt	12	41	Tank plug	2
14	Air pipe	2	42	Seal ring for tank	2
15	Gasket	4	43	Drain valve	1
16	Lock screw	2	44	Air tank	1
17	Lock block	2	45	Bolt for pad	2
18	Valve block A	2	46	Foot pad	2
19	Valve plate	2	47	Nut	2
20	Valve block B	2	48	Power plug	1
21	Screw	2	49	Check valve	1
22	Crankshaft	2	50	Solenoid valve	1
23	Bearing	2	51	Pressure gauge Y50	1
24	Socket screw	2	52	Outlet valve	1
25	crankcase	2	53	Pressure switch	1
26	Nut	2	54	Pressure gauge Y40	1
27	Screw	4	55	Regulator	1
28	gasket	4	56	Double joint	1

CHINAHUAGE.COM